

20
11/16

John City Road

Huber road

Road 144
40 feet wide cal pg 253

Road 131 40 feet wide
Book 4 Page 131

40 ft in P. 107 with Su

Joseph Rhine Road
40 feet wide

40 feet wide

30-40 feet wide

South Prescott Rd S. Minuted Bk 452, 453
40 feet wide

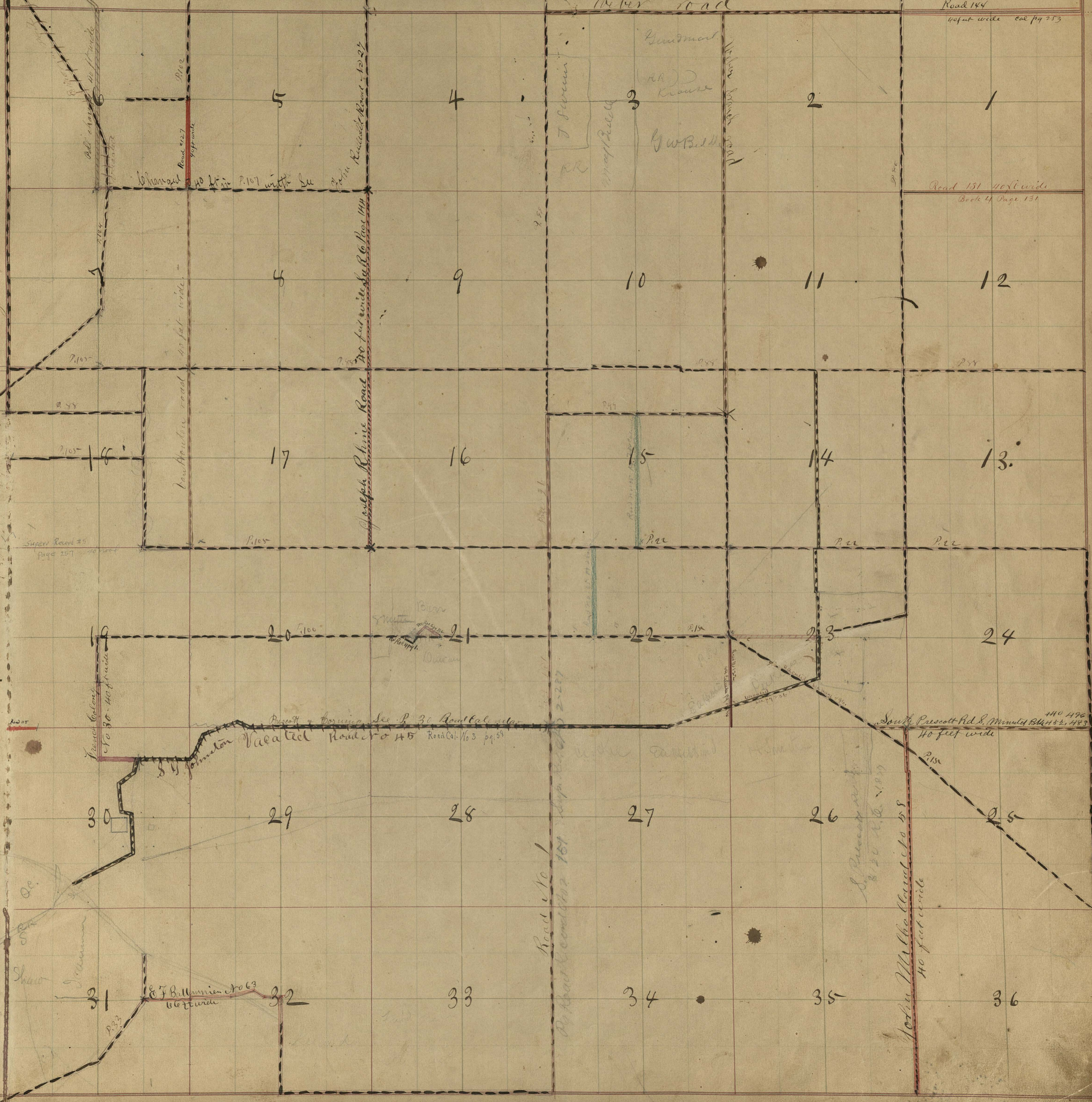
40 feet wide

E. J. Ballantine No 63

Road No 1

Road No 181

1893



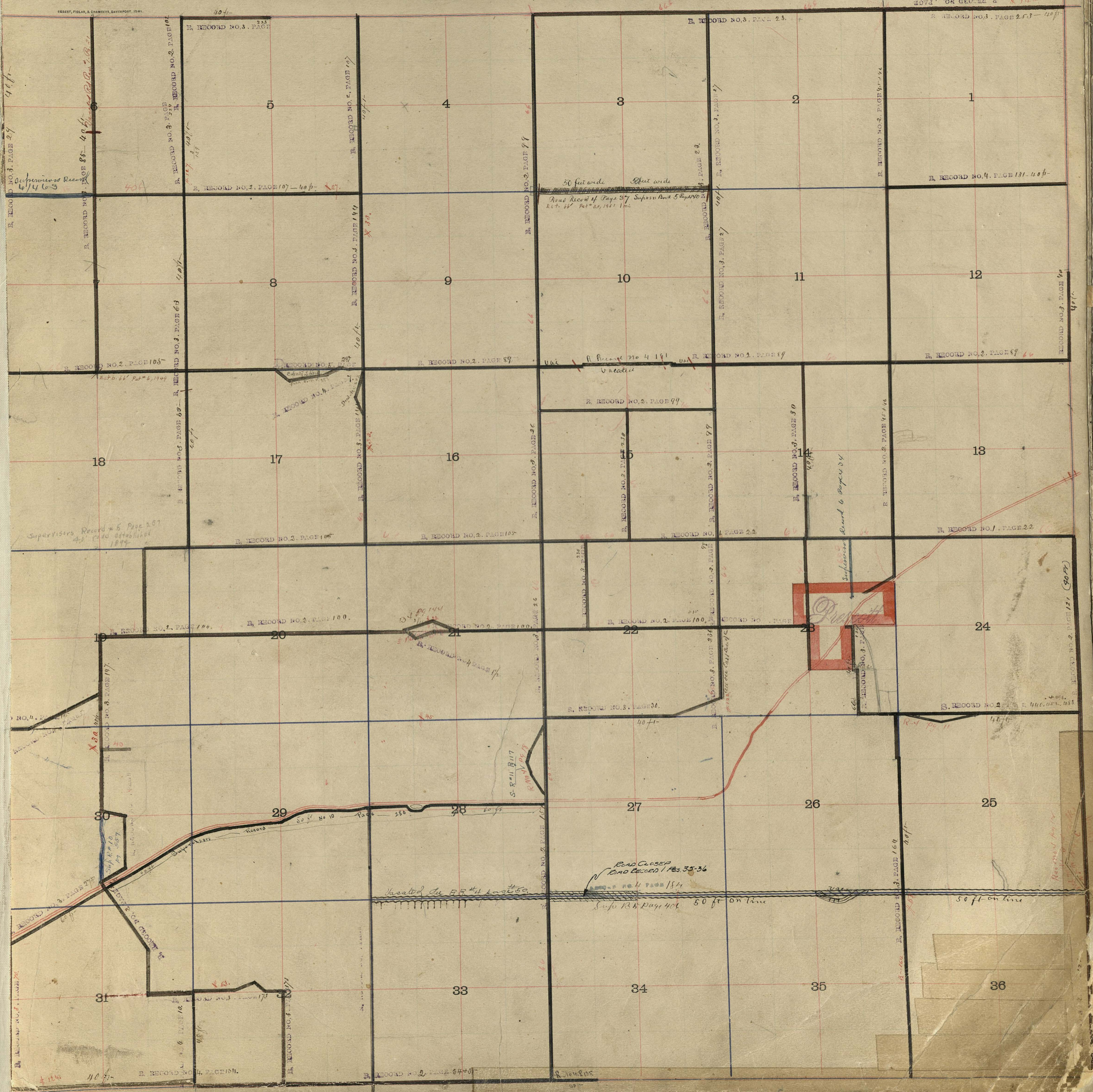
Survey Record 25
Page 257

Beaver
Ditch

Prescott & Corning Sec. P. 30 Road Cal. vol 45
Road Cal. No 3 pg 59

1893

ROAD MAP OF TOWNSHIP 17, ADAMS COUNTY, IOWA



Supervisors Record #6
6/4/63

Supervisors Record #6 Page 267
Ad. road established
1894

50 feet wide
Road Record # Page 37
Est. 66' Pat. 20, 1951 1952

Vacated
R. Record No 4 191

Supervisors Record to page 34

ROAD CLOSED
ROAD RECORD # 173 33-36
Supo R.B. Page 401
50 ft on line

Proctor

R. RECORD NO. 3, PAGE 24
R. RECORD NO. 3, PAGE 83
R. RECORD NO. 2, PAGE 102
R. RECORD NO. 2, PAGE 107 - 40 ft

R. RECORD NO. 2, PAGE 105
R. RECORD NO. 3, PAGE 63
R. RECORD NO. 2, PAGE 105

R. RECORD NO. 2, PAGE 99
R. RECORD NO. 3, PAGE 149
R. RECORD NO. 3, PAGE 26

R. RECORD NO. 2, PAGE 99
R. RECORD NO. 3, PAGE 27
R. RECORD NO. 2, PAGE 99

R. RECORD NO. 3, PAGE 23
R. RECORD NO. 3, PAGE 27
R. RECORD NO. 2, PAGE 99

R. RECORD NO. 4, PAGE 131 - 40 ft
R. RECORD NO. 2, PAGE 99
R. RECORD NO. 2, PAGE 99

R. RECORD NO. 2, PAGE 105
R. RECORD NO. 3, PAGE 63
R. RECORD NO. 2, PAGE 105

R. RECORD NO. 2, PAGE 105
R. RECORD NO. 3, PAGE 63
R. RECORD NO. 2, PAGE 105

R. RECORD NO. 2, PAGE 99
R. RECORD NO. 3, PAGE 149
R. RECORD NO. 3, PAGE 26

R. RECORD NO. 2, PAGE 99
R. RECORD NO. 3, PAGE 27
R. RECORD NO. 2, PAGE 99

R. RECORD NO. 3, PAGE 23
R. RECORD NO. 3, PAGE 27
R. RECORD NO. 2, PAGE 99

R. RECORD NO. 4, PAGE 131 - 40 ft
R. RECORD NO. 2, PAGE 99
R. RECORD NO. 2, PAGE 99

R. RECORD NO. 3, PAGE 107
R. RECORD NO. 3, PAGE 117
R. RECORD NO. 3, PAGE 117

R. RECORD NO. 2, PAGE 100
R. RECORD NO. 2, PAGE 100
R. RECORD NO. 2, PAGE 100

R. RECORD NO. 2, PAGE 100
R. RECORD NO. 2, PAGE 100
R. RECORD NO. 2, PAGE 100

R. RECORD NO. 2, PAGE 100
R. RECORD NO. 2, PAGE 100
R. RECORD NO. 2, PAGE 100

R. RECORD NO. 2, PAGE 100
R. RECORD NO. 2, PAGE 100
R. RECORD NO. 2, PAGE 100

R. RECORD NO. 2, PAGE 100
R. RECORD NO. 2, PAGE 100
R. RECORD NO. 2, PAGE 100

R. RECORD NO. 2, PAGE 100
R. RECORD NO. 2, PAGE 100
R. RECORD NO. 2, PAGE 100

R. RECORD NO. 2, PAGE 100
R. RECORD NO. 2, PAGE 100
R. RECORD NO. 2, PAGE 100

R. RECORD NO. 2, PAGE 100
R. RECORD NO. 2, PAGE 100
R. RECORD NO. 2, PAGE 100

R. RECORD NO. 2, PAGE 100
R. RECORD NO. 2, PAGE 100
R. RECORD NO. 2, PAGE 100

R. RECORD NO. 2, PAGE 100
R. RECORD NO. 2, PAGE 100
R. RECORD NO. 2, PAGE 100